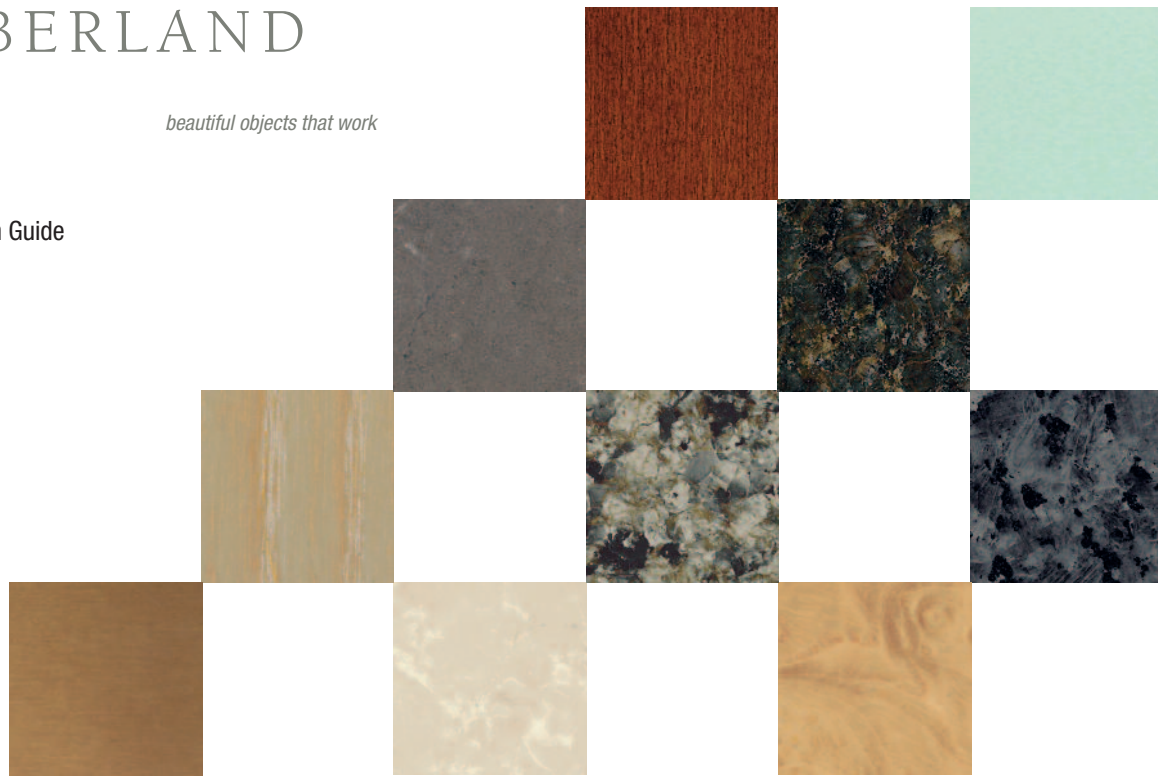


CUMBERLAND

beautiful objects that work

Materials Selection Guide



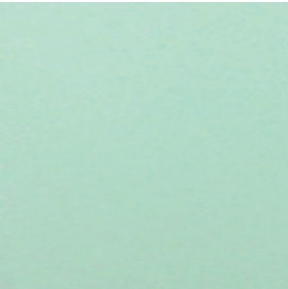
Beautiful objects that work correspond in form and appearance.

Cumberland furniture achieves a harmony of expression across all its products through an offering of three versatile palettes—light, medium and dark.

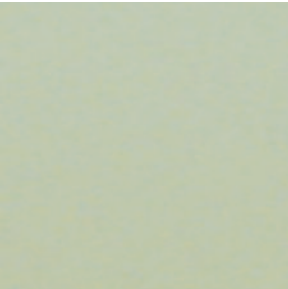
The light palette features timeless neutrals of muted coloration. The medium palette presents a range of browns in classic, stylish tones. The dark palette achieves its richness through a selection of elegant hues.

Each palette enables a wide scope of expression. Blending palettes multiplies the possibilities. The result expresses harmony for the eye that is sophisticated and enduring.

Painted Glass Finishes



Ice GLSPNT-03



Haze Green GLSPNT-04



Wolf GLSPNT-05



Burnished Mahogany GLSPNT-02



Annubis GLSPNT-01

Glass with the bottom side painted in soft earthtones is an option offered on many of our tables.

Steel Finishes



Polished Stainless Steel



Satin Stainless Steel



Statuary Bronze

Table Leathers

Light Palette



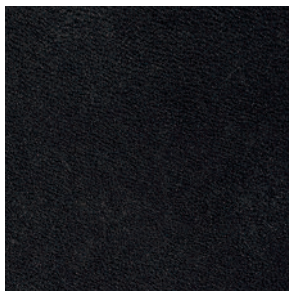
Leather = Elmosoft 00100
Faux Leather = DesignTex 2383-101

Medium Palette



Leather = Elmosoft 93068
Faux Leather = Maharam Lariat 011





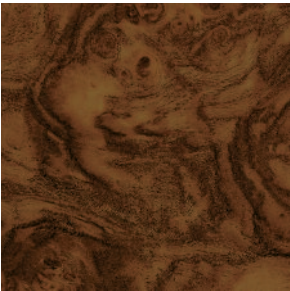
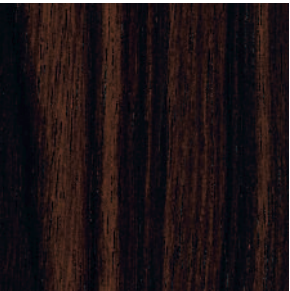
Dark Palette



Leather = Elmosoft 99999
Faux Leather = DesignTex 2383-802

The light, medium and dark palette leather colors are offered as options on the Suo table top and the Metros and Fortis table bases. (Metros and Fortis material is Faux leather.)


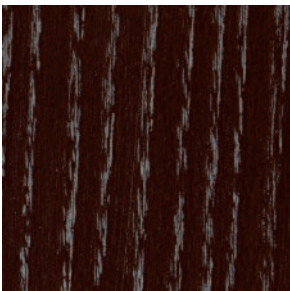
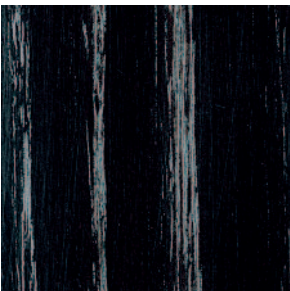
Option A Exotic Woods

Light Palette	Medium Palette	Dark Palette
		
Figueiredo Sycamore FS	Fiddleback Mahogany FM	Santos Rosewood RW
		
White Ash Burl AB	Walnut Burl WB	Quartered Macassar Ebony EN

Option A Exotic Woods

Option A Exotic Woods are species, not finishes. They are offered as shown on samples and in the finish selector with little or no stain applied so their natural beauty can be seen. Option A Exotic Woods can also be finished in our standard MP-Finishes, as long as the Option A Exotic Wood is lighter than the standard finish you select.

Cerused Finish Options on Ash

Light Palette	Medium Palette	Dark Palette
		
Fog, Cerused on Ash AS-4C	Truffle, Cerused on Ash AS-7C	Poppy, Cerused on Ash AS-14C

Cerused Finish Options on Ash

To accentuate the deep grain of ash we have developed a Cerused finish in each of our light, medium and dark palettes. This finish involves a hand-wiping process that leaves a lighter-color glaze in the deep grain to contrast with the surface color. The Cerused finish is available at an additional charge on select products.

Note on finish selector.

Finishes shown are as accurate as possible given the limitations of the printing process. Order actual samples by contacting us at 800 401 7877. Please be aware that veneer and stone samples exhibit some variation in grain, color and veining due to the natural characteristics of wood and stone. Therefore, we cannot guarantee an exact match to these printed samples or actual samples.

Standard Finishes on Maple

Light Palette



Natural MP-0



Straw MP-02



MP-03 Smoke



Putty MP-04



Caramel MP-06



Pecan MP-07



Amber MP-18

Standard Finishes and Finish Limitations

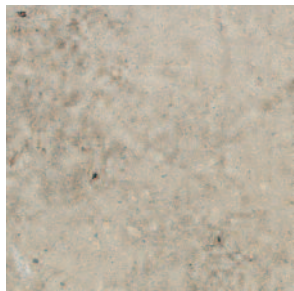
Our finish sample colors are shown on Maple. Maple is standard on most of our products, but other wood species may be available as well. Standard finish colors are available on other species with some limitations. Because many optional wood species are naturally darker than maple, they preclude the use of some of our lighter finishes. As a general rule, most of our medium and darker finishes can be used on optional species such as Cherry, Ash, Walnut and Mahogany.

Stones

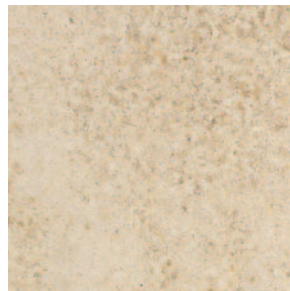
Light Palette



Botticino Fiorito Marble A



Deauville Blue Limestone A



St. Hubert Limestone B



Crema Marfil Marble C



Sahara Gold Marble C

Stone Characteristics

Atlantic Blue Granite, Deauville Blue Limestone, St. Hubert Limestone, and Lago Blue Limestone have a honed, matte finish; all others are polished.

Medium Palette



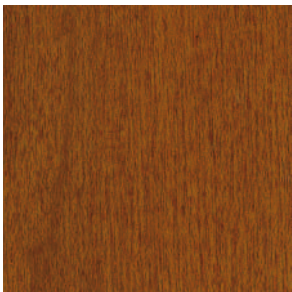
Java MP-08



Taro MP-11



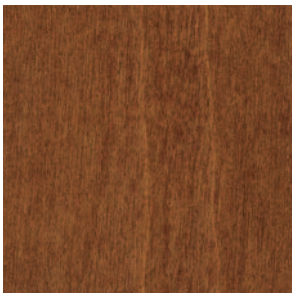
Bark MP-12



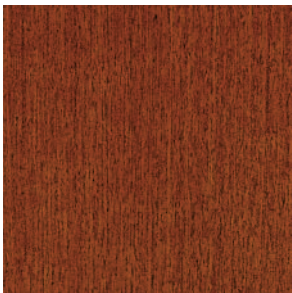
Chestnut MP-19



Latte MP-24

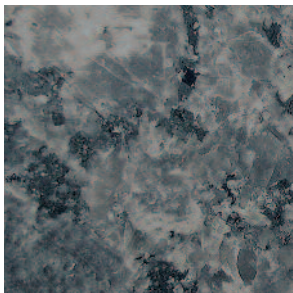


Toffee MP-25

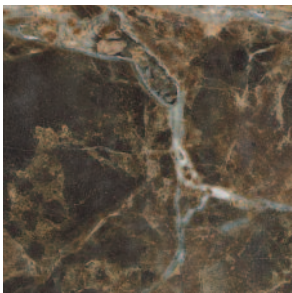


Ginger MP-45

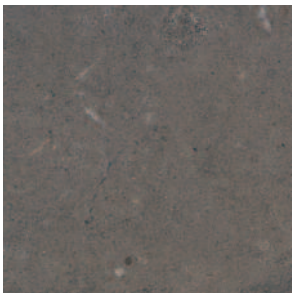
Medium Palette



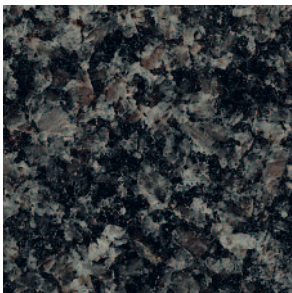
Atlantic Blue Honed Granite C



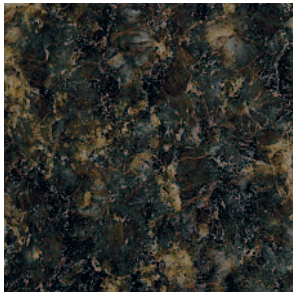
Serena Marble B



Lagos Blue Limestone B



Impala Black Granite A

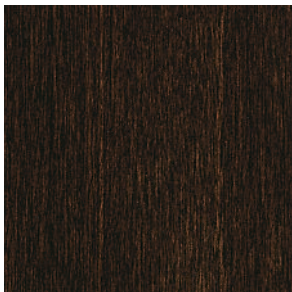


Uba Tuba Granite B

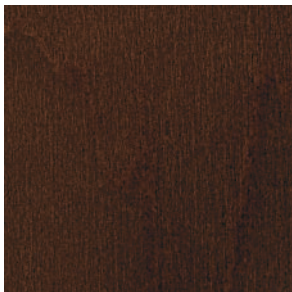
Dark Palette



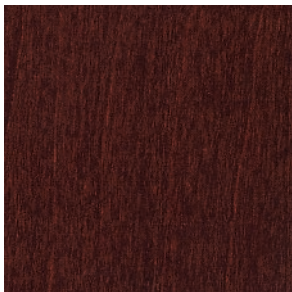
Currant MP-09



Mink MP-13



Bison MP-14



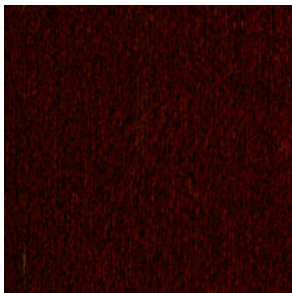
Cinnabar MP-16



Coal MP-17



Nutmeg MP-21

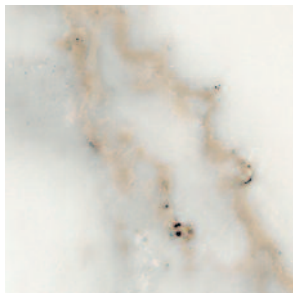


Cabernet MP-22

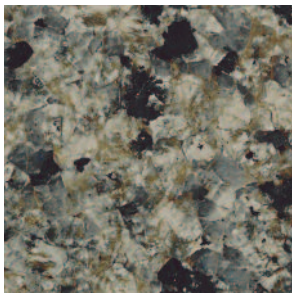


Earth MP-23

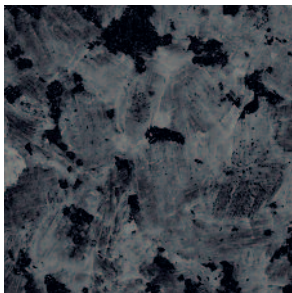
Dark Palette



Calacata Gold Marble C



Silver Sea Green Granite C



Blue Pearl Granite C



White Carrara Marble B



Absolute Black Granite B